

Performance Series

Intelligent Industrial Thermal Printers ■ ■ ■



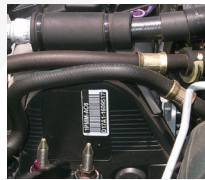
features at a glance ■ ■ ■

- **PCL5e Standard Language** - makes graphics integration easier and allows users to spend less time setting up printers. Offers virtually endless application choices.
- **Easy ERP integration** - a benefit that derives from a true PCL5 thermal barcode printer. Middleware applications are no longer necessary within printer networks. All Performance printers are approved through the SAP® Printer Vendor Program.
- **Laser and inkjet printer** - users can realize the benefits of a ruggedized thermal barcode printer and reduce operating costs with seamless integration of a true PCL5 device.
- **Media auto-loading and calibration** - to give printer operators freedom from complex and time consuming media setup.
- **Graphic color touchscreen** - display with an intuitive menu flow making the user interface and navigation seamless.
- **Die cast frame** - and metal covers designed specifically for harsh work environments.
- **Standard 300 dpi printhead** - with each Performance Series printer allows users to now benefit from a higher resolution printhead with better text, images and barcodes at a 203 dpi printhead price.
- **50 resident scalable fonts** - is the new standard in thermal barcode printing. No longer restricted to a limited font selection, users can create custom labels on-demand.

The Datamax-O'Neil Performance Series is a new, innovative family of printers that was designed to resolve a number of issues customers had been having with thermal printers for many years. The result is a printer family that is the easiest to load, easiest to use and easiest to integrate of any thermal printers available anywhere. The Performance Series printers offer superior print quality, auto-load capabilities, user-friendly color touchscreen, unparalleled print registration and an industry standard printer language, PCL. PCL is standardized to run on a variety of operating systems, so it is independent of any application software running on a computer. This ensures faster and easier plug-play integration, getting your printer systems up and running sooner.

The Performance Series printers are manufactured to the highest standards and feature a die cast frame and metal covers which are ideal for industrial environments. Available in 4" (4.16in / 105.7mm or 6" (6.83in / 173.5mm) label printing capabilities, the thermal printers also can print at speeds from 6 ips / 152 mmps to 10 ips / 254 mmps and from 300 dpi to 600 dpi to meet the most diverse requirements.

popular applications ■ ■ ■



Manufacturing

- Asset Tracking
- Finished Goods Marking
- Agency Labels
- Case Labels



Food and Beverage

- High Resolution Labeling
- Expiration Dates and Time Stamps
- Product Identification
- Shipping Labels



Transportation and Logistics

- Cross Docking
- Sorting Centers
- Shipping Labels
- Pallet Tracking



Pharmaceuticals

- Compliance Labels
- Product Identification
- Track and Trace
- Pick Lists

your benefits ■ ■ ■

Non-Proprietary PCL – The Performance Series offers PCL, a globally adopted standard/laser compatible printer language that allows easy integration into SAP® and other network environments.

Most Advanced Interface – The industry's most intuitive color touchscreen makes set up and performance enhancements as simple as 1-2-3. The printer provides front panel print quality adjustments, auto media calibration and loading as well as ribbon tensioning controls.

Options Galore! – The Performance Series printers are available with numerous options to meet the most diverse requirements. Some of the options include internal rewinder, peeler and cutter, USB host, GPIO, 802.11 b/g, audio alarm.

Easiest Setup and Network Management.



- Use your Standard Network Management tools!
- Like Tivoli and HP OpenView
- Network Time Protocol (NTP)
- Robust SNMP support.
- HTTP Web Server

product specifications

Printer Model	p1115	p1115s	p1125	p1725
Max Print Speed	6ips/152mm/ps	6ips/152mm/ps	10ips/254mm/ps	10ips/254mm/ps
Resolution	300dpi/11.8dppmm	600dpi/23.6dppmm	300dpi/11.8dppmm	300dpi/11.8dppmm
Max Print Width	4.16in / 105.7mm	4.16in / 105.7mm	4.27in / 108.5mm	6.83in / 173.5mm
Label Width	1"-4.65" (25.4-118.1mm)	1"-4.65" (25.4-118.1mm)	1"-4.65" (25.4-118.1mm)	2"-7.1" (50.8mm-180.3mm)
Dimensions	35.7lbs/16.2kg WxDxHin 10.8x18.7x11.9 WxDxHmm 274x475x302	36.5lbs/16.56kg WxDxHin 10.8x18.7x11.9 WxDxHmm 274x475x302	36.5lbs/16.56kg WxDxHin 10.8x18.7x11.9 WxDxHmm 274x475x302	42.75lbs/19.3kg WxDxHin 13.4x18.7x11.9 WxDxHmm 339x475x302

*Print length values vary with printer configuration

physical characteristics

- Printhead Technology
 - » Flat head
 - » Printhead Pressure adjustment
 - » Patent Pending Automatic Printhead pressure adjustment. (increases printhead life) ^
 - » Printhead cooling fan ^
- Operating temperature
 - » Operating: 32°F (0°C) to 104°F (40°C) Storage: -4°F (-20°C) to 140°F (60°C)
- Power source
 - » Universal (PFC-compliant) power supply 90-264 VAC; 47-63Hz
- Construction
 - » Solid Aluminum Die Cast Powder coated Frame, with metal slide opening cover to load media with a large clear media window
- Safety
 - » Media Cover open warning
- Control Panel
 - » Graphic 320 x 240 Color touch Screen Display with wallpaper.
- Memory (1725 & p1115s) (p1115 & p1125)
 - » 64MB Flash/64MB SDRAM 32MB Flash/64MB SDRAM
- Real Time Clock
 - » Real Time Clock (RTC) with user replaceable 3 year battery
 - » Paper Low Sensor and Ribbon Low Sensor
 - » Capable of paper low notification, reducing down time.
- Printer Type
 - » Direct Thermal (Optional Thermal Transfer)

integration

- Communication Interfaces
 - » USB 2.0 Device Standard
 - » 10/100 Base-T Ethernet Standard
 - » Wireless Module- 802.11 b/g Optional
 - » Applicator GP I/O & Serial (RS-232C) Port Optional
 - » USB Host connection Optional
- Security Protocols:
 - » WEP WPA WPA2
 - » Modes PSK/Enterprise
 - » Security/
 - » Encryption 64/128 TKIP/RC4 CCMP/AES
 - » Authentication LEAP, EAP-PEAP, EAP-FAST,
 - » EAP-TTLS, EAP-LEAP, IPV4
- Network/Software support:
 - » DHCP, TCP/IP, UDP, DNS, BOOTP, NTP, SSH
 - » SNMP Robust MIB
 - » Embedded Configurator: Resident printer configuration tool
 - » Embedded Network web pages
 - » Drivers: Windows® XP, Windows® 7
 - » Network Management is done with your standard HP Compatible network management tools. Works with HP Openview®, Tivoli® and others.
- Apple
 - » Works in MacBook Pro® with the HP Laserjet® Series PCL4/5 driver
 - » SAP® Printer Vendor Program.

accessories

External rewinder
Media Catch tray*

barcodes/fonts/graphics

- Bar Codes
 - » Aztec, Codabar, Code 128 Autoswitch, Code 128 Code Set A, Code 128 Code Set B, Code 128 Code Set C, Code 3 of 9, Code 93, DataMatrix, EAN-13, EAN-8, Extended Code 3 of 9, FIM, GS1 Databar (RSS), GS1-128(UCC/EAN Code 128), HIBC, Interleaved 2 of 5 with a module 10 checksum, & shipping bearer bars, MicroPDF417, PDF-417, Planet, Plessey, Postnet, QR Code – Auto format, Telepen, UPC-A, UPC-E, UPS MaxiCode
- Fonts
 - » 50 Standard resident Scalable fonts: Albertus Medium, Albertus Extra Bold, Antique Olive, Antique Olive Italic, Antique Olive Bold, Arial, Arial Italic, Arial Bold, Arial Bold Italic, Clarendon Condensed Bold, Coronet, Courier, Courier Italic, Courier Bold, Courier Bold Italic, Garamond Antiqua, Garamond Kursiv, Garamond Halbfett, Garamond Kursiv Halbfett, Letter Gothic, Letter Gothic Italic, Letter Gothic Bold, Marigold, CG Omega, CG Omega Italic, CG Omega Bold, CG Omega Bold Italic, CG Times, CG Times Italic, CG Times Bold, CG Times Bold Italic, CG Triumvirate Bold, CG Triumvirate Bold Condensed, Times New Roman, Times New Roman Italic, Times New Roman Bold, Times New Roman Bold Italic, Univers Medium, Univers Medium Italic, Univers Bold, Univers Bold Italic, Univers Condensed Medium, Univers Condensed Medium Italic, Univers Condensed Bold, Univers Condensed Bold Italic, Symbol, Wingdings, OCR-B, OCR-A
- Downloadable Font Types
 - » True-Type, PCL Bitmap (300 dpi), or (600 psi on the p1115s)
- PCL Macros
 - » Multiple PCL Macros can be store in flash.
 - » Overlay Macros can be used and store in flash.
- Graphics
 - » Full support of PCL5e and GL/2 graphics capability is provided. (Support of various host based file formats such as PCX, BMP are not part of the PCL5e standard but are supported and converted by standard applications) Industry standard printer language HP PCL, HP PCL 5e, HP GL/2 and HP XL, printer languages with auto language select in addition to extensions for barcode. Also provides standard bi-directional communications capabilities.

^ [not available on p1115], *p1725 these options are coming soon. **Not available on p1725

warranty

- Printer*: 1 year (including platen roller and installed options)
 - Printhead*: 1 year or 1,000,000 inches whichever comes first
 - Contact sales representative for extended warranty options
- *when used with approved supplies

media supply

- Media types:
 - » Roll-fed, die-cut, continuous labels: perforated or continuous tag/ticket stock 8in/203mm roll max diameter on 3in/76mm core wound out
 - » Fan fold stock accepted.
- Media thickness range:
 - » 0.003" - 0.01" (0.076mm - 0.254mm)
- Top-Of-Form Sensor/Media Sensing
 - » Double Sided Adjustable position for label gap, notch and reflective black mark on bottom or top of form.
- Label backfeed:
 - » For use with optional cutter & Peel and Present.
- Ribbon
 - » Core: 1.0" (25.4mm)
 - » Length: 1968' (600m)
 - » Coated side in and coated side out
- Reference model above for width.

options

- Thermal Transfer
- Internal Powered Rewind with adjustable tension.
- Peel & Present*
- Cutter*
- Cutter Tray*
- Audio Alarm
- 1" or 1.5" Media Hub Adapters**
- Expanded 64MB Flash Memory

agency approval

CE, UL, C/UL, UL Mexico CoC and other approvals.

Contact sales representative for the most current approval list.



datamax • o'neil
right by our customers.

A Company

www.datamax-oneil.com



Datamax-O'Neil is a silver-level member of the SAP® Printer Vendor program. The Datamax-O'Neil Performance Series printers are compliant with all requirements for device types as defined in the SAP® Printer Vendor program.

Specifications subject to change without notice. Copyright 2014, Datamax-O'Neil (rev3.20.14)